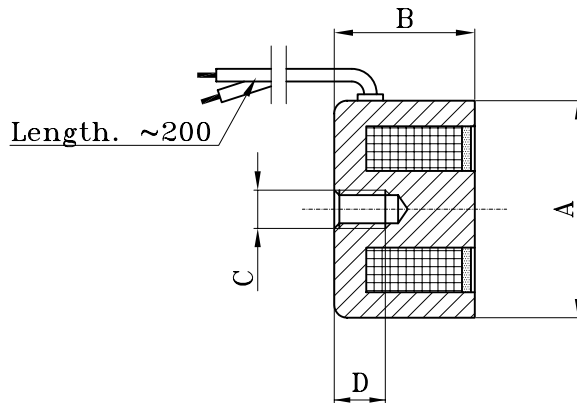


CT type Electromagnets



MODEL	A	B	C	D	WEIGHT
CT 35	ø35	22	M6	10	0,16 Kg
CT 45	ø45	30	M8	15	0,29 Kg
CT 55	ø55	30	M8	15	0,44 Kg
CT 65	ø65	33	M10	15	0,67 Kg
CT 95	ø95	35	M12	20	1,60 Kg

Tolerances on the dimensions $\pm 0.7\text{mm}$

Electromagnets type CT technical specifications

MODEL	VOLTAGE V _{Dc}	ABSORPTION		VOLTAGE V _{cc}	ABSORPTION		RETENTION FORCE	DUTY ED%	IP PROTECTION
		Amp.	Watt		Amp.	Watt			
CT 35	12	0.31	3.8	24	0.18	4.4	150 N	100%	65
CT 45	12	0.43	5.2	24	0.17	4.1	290 N	100%	65
CT 55	12	0.34	4.2	24	0.15	3.6	660 N	100%	65
CT 65	12	0.35	4.3	24	0.18	4.4	800 N	100%	65
CT 95	12	0.63	7.6	24	0.3	7.3	1200 N	100%	65

The "retention" force is proportional to the power in Watts of the coil, to the operating temperature, the ED% duty, the size of the electromagnet, and the quality of the "contact" between the electromagnet and the "retained" part.

The forces indicated above refer to a single work cycle at a temperature of 20°C. The above data is strictly rated; a variation in any of the data leads to a consequent variation in all other data.

System di Rosati reserves the right to make changes to the dimensions and characteristics described on this data sheet without prior notice.

Requirements other than the above can be met upon request.